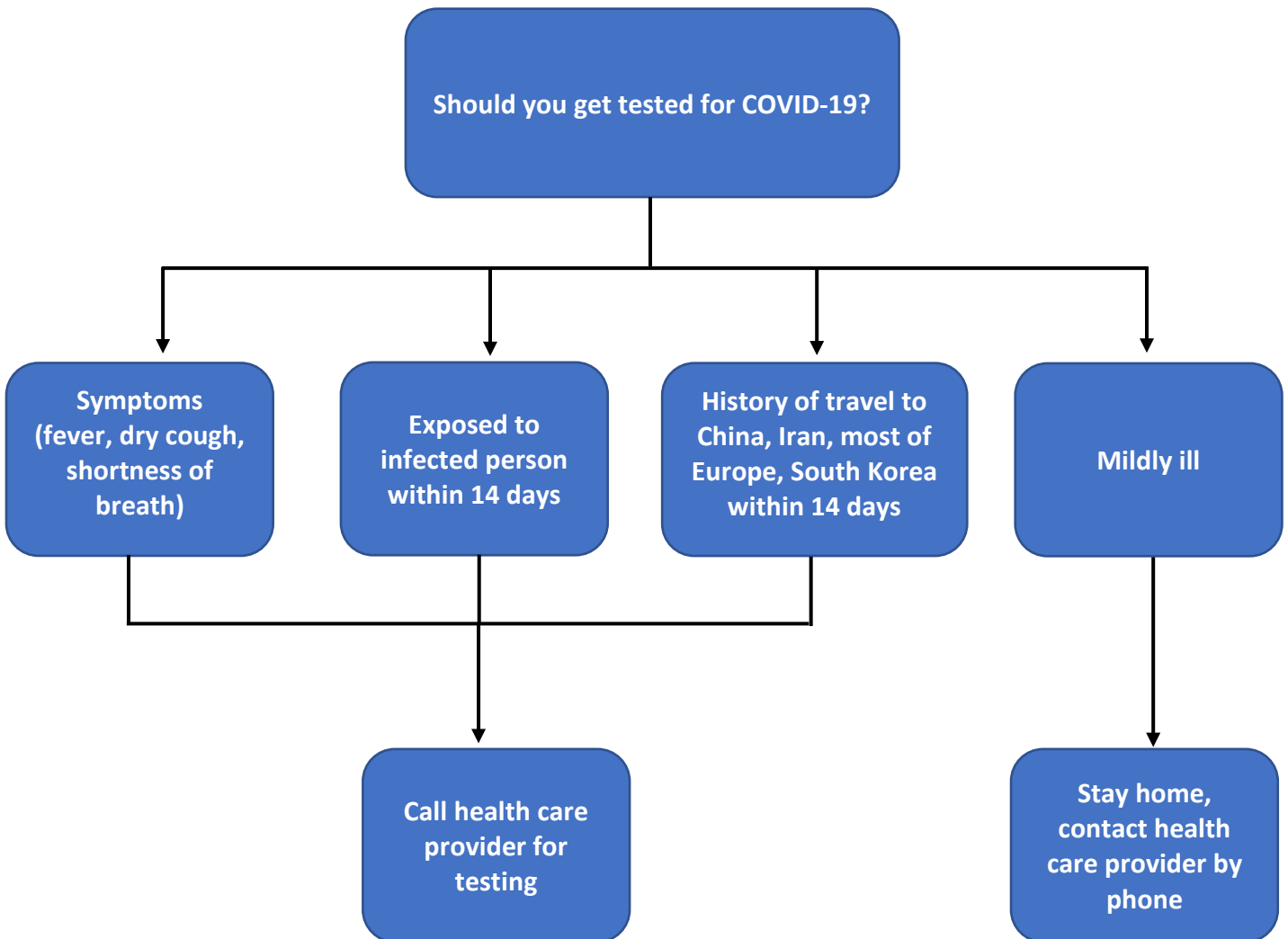


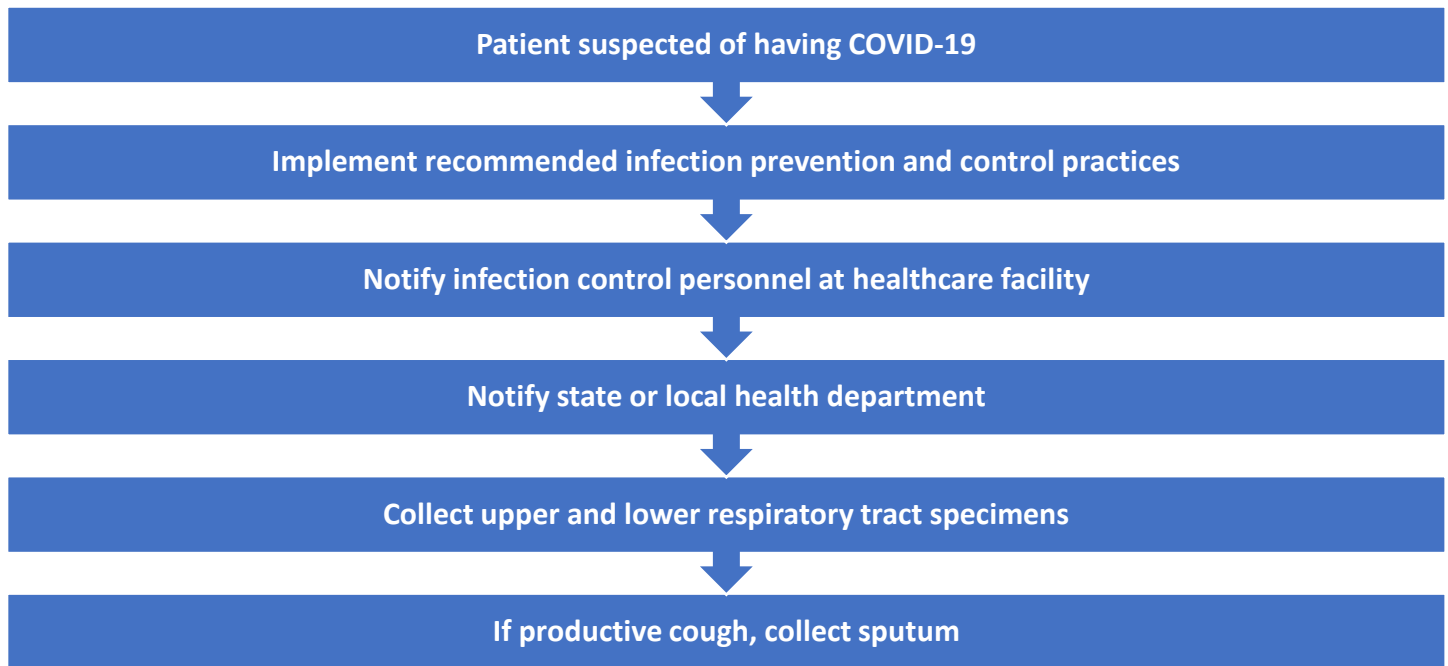
COVID-19 Test Kits

For Patients¹⁻³:



- * Patients experiencing severe symptoms, such as difficulty breathing, should seek care immediately.
- * Elderly patients and individuals who have underlying medical conditions or are immunocompromised should contact their physician early in the course of even mild illness.
- * Specific recommendations for each state listed in Appendix A

For Clinicians³:



Where to Access Tests:

- Public health laboratories get access to testing kits from the CDC through the international reagent resource³
- Clinicians get access to COVID-19 testing through clinical laboratories performing tests authorized by FDA under an Emergency Use Authorization³
- Current list of labs available for testing (as of 3/16/2020 at 9:30 am)⁴:
 - Assurance Scientific Laboratories (AL)
 - Stanford University (CA)
 - University of California Medical Center (CA)
 - Yale New Haven (CT)
 - NorthShore University Health System (IL)
 - Solaris Diagnostics (KY)
 - Massachusetts General/Brigham and Women's Hospital (MA)
 - Johns Hopkins (MD)
 - Mayo Clinic (MN)
 - Viracor Eurofins (MO)
 - Washington University in St. Louis (MO)
 - Hackensack Meridian Health (NJ)
 - TriCore Reference Laboratories (NM)
 - BioReference Laboratories (NY)
 - New York Presbyterian (NY)
 - Northwell Labs (NY)
 - Cleveland Clinic (OH)
 - University of Pittsburgh Medical Center (PA)
 - ARUP Laboratories (UT)
 - University of Washington Virology Lab (WA)
 - Bill & Melinda Gates Foundation
 - Centers for Disease Control and Prevention
 - LabCorp
 - Public Health Labs Nationwide
 - Quest Diagnostics
- **Real-time updates of available labs testing:** <https://twitter.com/COVID2019tests>
- Parking lots offering space for drive-thru testing locations⁵:
 - CVS
 - Dickinson and Company
 - LabCorp
 - LHC Group and Becton
 - Quest Diagnostics
 - Roche Diagnostics
 - Signify Health
 - Target
 - Thermo Fisher Scientific
 - Walgreens
 - Walmart

Bottom Line

- If a patient is concerned about COVID-19, speak to a health care professional and CALL before coming in to minimize risk of exposure to other patients
- Testing varies state by state and the availability of public vs. private lab center tests varies
- Though availability is limited, especially in rural areas, officials are working toward increasing testing

Appendix A⁶:

Alabama	<ul style="list-style-type: none">• Call health care provider if you are concerned you need to be tested• If you do not have a healthcare provider, call 1-888-264-2256• If patient meets testing criteria, health care providers order tests and results should be available in 24-72 hours
Alaska	<ul style="list-style-type: none">• Call health care provider if you are concerned you need to be tested
Arizona	<ul style="list-style-type: none">• Call health care provider if you are concerned you need to be tested• If patient meets state's criteria for testing: The Arizona State Public Health Lab and several private labs, including Sonora Quest, Mayo, LabCorp and Arup Laboratories, are conducting testing in the state• Results typically available within 24 hours• Call 1-844-542-8201 for more information
Arkansas	<ul style="list-style-type: none">• Call health care provider if you are concerned you need to be tested• The state test results are available ~24 hours after testing, limited private testing is available (specific labs are not mentioned) and the turnaround may be different• For more information, call 800-803-7847
California	<ul style="list-style-type: none">• Call health care provider if you are concerned you need to be tested• Public health labs in 18 counties testing, patients may be tested at private labs (though limited and specific companies not noted)• Most test results available in 48-72 hours
Colorado	<ul style="list-style-type: none">• Call health care provider if you are concerned you need to be tested• Patient must meet state's criteria for testing• Colorado's state public health lab is conducting drive-up testing• LabCorp and Quest also conducting tests• Results available within 72 hours• For more information, call 303-389-1687 or 877-462-2911
Connecticut	<ul style="list-style-type: none">• Call health care provider if you are concerned you need to be tested
Delaware	<ul style="list-style-type: none">• Call health care provider if you are concerned you need to be tested• If you do not have a primary care doctor, call the Delaware Division of Public Health's call center at 866-408-1899• The state is only recommending testing for people with symptoms• If patient meets testing criteria, provider samples and sends to the state's public or private lab• Approval from the Division of Public Health is required for testing at the state public health lab, but not for commercial lab testing• ChristianaCare currently conducting drive-thru testing• Results typically available within 24 hours• For more information, call 1-866-408-1899 or email dphcall@delaware.gov
District of Columbia	<ul style="list-style-type: none">• Call health care provider if you are concerned you need to be tested
Florida	<ul style="list-style-type: none">• Call health care provider if you are concerned you need to be tested• Patient must meet state's criteria for testing

	<ul style="list-style-type: none"> • If criteria are not met, you can discuss with your provider about getting tested at a commercial lab (LabCorp or Quest) • State lab results available in 24-48 hours and commercial labs can take 3-4 days • For more information, call 866-779-6121
Georgia	<ul style="list-style-type: none"> • Call health care provider if you are concerned you need to be tested • Patient must meet state's criteria for testing • If priority is not met, patients can consider testing at commercial labs
Hawaii	<ul style="list-style-type: none"> • Call health care provider if you are concerned you need to be tested • If state criteria met, Hawaii Department of Health conducts tests • Tripler Army Medical Center Lab also conducting tests and does not require department authorization • Test results available ~24 hours
Idaho	<ul style="list-style-type: none"> • Call health care provider if you are concerned you need to be tested • Any provider can request a test from the state, test results usually available within 24 hours • Private labs, including LabCorp and Quest, also conducting testing with different result times • For more information, call 2-1-1
Illinois	<ul style="list-style-type: none"> • Call health care provider if you are concerned you need to be tested • Patient must meet state's criteria for testing • Provider may send samples to public health lab and results available within 24 hours • Commercial labs are starting to run tests, but results must be sent to Illinois Department of Public Health's laboratory for confirmation • For more questions, call 1-800-889-3931 or email DPH.SICK@ILLINOIS.GOV
Indiana	<ul style="list-style-type: none"> • Call health care provider if you are concerned you need to be tested • The provider must have authorization from the Indiana State Department of Health for the test to be evaluated by the department • Results available within 24 hours • Individuals who are not high risk are encouraged to consult their provider about possible private testing • For more questions, call 317-233-7125 [317-233-1325 after hours] or email epiresource@isdh.in.gov
Iowa	<ul style="list-style-type: none"> • Call health care provider if you are concerned you need to be tested • For more information, call 211
Kansas	<ul style="list-style-type: none"> • Call health care provider if you are concerned you need to be tested
Kentucky	<ul style="list-style-type: none"> • Call health care provider if you are concerned you need to be tested
Louisiana	<ul style="list-style-type: none"> • Call health care provider if you are concerned you need to be tested
Maine	<ul style="list-style-type: none"> • Call health care provider if you are concerned you need to be tested
Maryland	<ul style="list-style-type: none"> • Call health care provider if you are concerned you need to be tested
Massachusetts	<ul style="list-style-type: none"> • Call health care provider if you are concerned you need to be tested • If patient meets testing criteria, provider sends swabs to state public health lab and results available within 24 hours
Michigan	<ul style="list-style-type: none"> • Call health care provider if you are concerned you need to be tested • Health care providers can request testing based on the patient's symptoms • Call coronavirus hotline, 1-888-535-6136, for more information

Minnesota	<ul style="list-style-type: none"> • Call health care provider if you are concerned you need to be tested
Mississippi	<ul style="list-style-type: none"> • Call health care provider if you are concerned you need to be tested • Providers do not need approval from the Mississippi State Department of Health to send samples to the public health laboratory, but priority is given to high-risk patients and those with the most severe symptoms • For more questions, call 877-978-6453
Missouri	<ul style="list-style-type: none"> • Call health care provider if you are concerned you need to be tested • Patient must meet state’s criteria for testing and results available within 24 hours • Patients who do not meet requirements can consider testing at a commercial laboratory, the approximate cost of a commercial test is \$199 and results available within 3 days • For more information, call 877-435-8411
Montana	<ul style="list-style-type: none"> • Call health care provider if you are concerned you need to be tested • Providers do not need department approval to administer a test
Nebraska	<ul style="list-style-type: none"> • Call health care provider if you are concerned you need to be tested
Nevada	<ul style="list-style-type: none"> • Call health care provider if you are concerned you need to be tested
New Hampshire	<ul style="list-style-type: none"> • Call health care provider if you are concerned you need to be tested • Provider collects specimens and sends to New Hampshire Public Health Laboratories • Results available within 24 hours
New Jersey	<ul style="list-style-type: none"> • Call health care provider if you are concerned you need to be tested • Patient must meet CDC criteria for testing • Specimens are tested by New Jersey’s Public Health and Environmental Laboratory and results are generally available within 24-48 hours • Patients who don’t meet priority criteria can discuss testing at commercial labs with their provider
New Mexico	<ul style="list-style-type: none"> • Call health care provider if you are concerned you need to be tested
New York	<ul style="list-style-type: none"> • Call health care provider if you are concerned you need to be tested • Health care providers determine whether a test should be done • Patient must meet state’s criteria for testing • 28 public and private labs conducting testing, as of March 13 (specific private labs are not listed) • State’s public health lab can complete a test in 3-5 hours • For more information, call 1-888-364-3065
North Carolina	<ul style="list-style-type: none"> • Call health care provider if you are concerned you need to be tested
North Dakota	<ul style="list-style-type: none"> • Call health care provider if you are concerned you need to be tested
Ohio	<ul style="list-style-type: none"> • Call health care provider if you are concerned you need to be tested
Oklahoma	<ul style="list-style-type: none"> • Call health care provider if you are concerned you need to be tested • If you do not have a provider, call coronavirus call center at 877-215-8336 • Patient must meet CDC criteria for testing • Only state lab conducting tests, results available within 24-48 hours
Oregon	<ul style="list-style-type: none"> • Call health care provider if you are concerned you need to be tested
Pennsylvania	<ul style="list-style-type: none"> • Call the state hotline 1-877-724-3258 if you think you need to be tested • Public health professional will speak with you and determine if and where you should go for testing, and can coordinate arrival at the health care facility to prevent further exposure

	<ul style="list-style-type: none"> • Both public and private labs (specific companies not noted) conduct tests • The state public lab requires approval by the health department for testing • Results from state lab take an average of 4-6 hours • For more information, call 1-877-724-3258
Rhode Island	<ul style="list-style-type: none"> • Call health care provider if you are concerned you need to be tested • Testing decided on case-by-case basis • Specimens are collected by the provider, then sent to the Rhode Island Department of Health's State Health Laboratories for analysis • Results available within 24-48 hours
South Carolina	<ul style="list-style-type: none"> • Call health care provider if you are concerned you need to be tested • Patient must meet state's criteria for testing • Clinicians collect specimens and send to South Carolina Public Health Laboratory and two private labs, LabQuest and LabCorp • Results from state lab typically available within 24 hours • For questions, call 1-855-472-3432
South Dakota	<ul style="list-style-type: none"> • Call health care provider if you are concerned you need to be tested • Patient must meet state's criteria for testing • Specimens collected by provider and sent to public health laboratory • Results can take up to 48 hours • For questions, call 1-800-977-2880
Tennessee	<ul style="list-style-type: none"> • Call health care provider if you are concerned you need to be tested • Testing decided by provider and state lab testing must be approved by Tennessee Department of Health • Private labs (no specific companies mentioned) do not require approval • Results from state lab available within 24-48 hours • For more information, call 877-857-2945
Texas	<ul style="list-style-type: none"> • Call health care provider if you are concerned you need to be tested • Patients must meet state's criteria to be tested • Patients who do not meet priority requirements can consider testing at commercial labs (LabCorp and Quest Diagnostics) • Results time depends on where the test is done and when it was sent
Utah	<ul style="list-style-type: none"> • Call health care provider if you are concerned you need to be tested • For more information, call 1-800-456-7707
Vermont	<ul style="list-style-type: none"> • Call health care provider if you are concerned you need to be tested • Patients must meet state's criteria to be tested • Health care provider arranges testing • Specimens collected at hospitals/clinical labs and sent to Vermont Department of Health Lab • Results typically available within 24-48 hours
Virginia	<ul style="list-style-type: none"> • Call health care provider if you are concerned you need to be tested • Provider works with state or local health department and CDC to determine if testing is necessary • Patients must meet state's criteria to be tested • Results from state's public health lab are generally available within 24 hours
Washington	<ul style="list-style-type: none"> • Call health care provider if you are concerned you need to be tested • No restrictions for testing, but up to the provider to decide

	<ul style="list-style-type: none"> • Specimen collection performed at provider's office and samples sent to facilities such as the Washington State Public Health Lab or the University of Washington Virology Lab for analysis • Results available within 24-48 hours
West Virginia	<ul style="list-style-type: none"> • Call health care provider if you are concerned you need to be tested • Patients must meet CDC criteria to be tested • Samples are sent to state's public health lab, commercial testing expected to begin soon • Results available within 24-72 hours
Wisconsin	<ul style="list-style-type: none"> • Call health care provider if you are concerned you need to be tested • Patients must meet CDC criteria to be tested • Tests are conducted by the Wisconsin State Lab of Hygiene and Milwaukee Health Department Lab • Results available within 24-48 hours
Wyoming	<ul style="list-style-type: none"> • Call health care provider if you are concerned you need to be tested • Patient must meet state's criteria for testing • Clinicians can order tests without health department approval • Providers collect specimens and send them to the public health lab or commercial labs (no specific companies) for analysis • Results typically available within 24 hours from public lab

Resources:

1. Coronavirus Disease (COVID-19) - events as they happen. World Health Organization. <https://www.who.int/emergencies/diseases/novel-coronavirus-2019/events-as-they-happen>. Accessed March 13, 2020.
2. Ferran M. Should I Be Tested for Coronavirus? Here's What You Need to Know About COVID-19 Tests. *ScienceAlert*. <https://www.sciencealert.com/how-does-the-coronavirus-test-work>. Accessed March 13, 2020.
3. Interim Guidance: Healthcare Professionals 2019-nCoV. Centers for Disease Control and Prevention. <https://www.cdc.gov/coronavirus/2019-nCoV/hcp/clinical-criteria.html>. Published March 14, 2020. Accessed March 16, 2020.
4. Capacity COVID-19 T. COVID-19 Test Capacity (@COVID2019tests). Twitter. <https://twitter.com/COVID2019tests>. Published March 16, 2020. Accessed March 16, 2020.
5. Walgreens, Target, CVS and Walmart to offer drive-thru virus testing. *Crain's Chicago Business*. <https://www.chicagobusiness.com/health-care/walgreens-target-cvs-and-walmart-offer-drive-thru-virus-testing>. Published March 14, 2020. Accessed March 16, 2020.
6. Kaplan A, Georgiev P, Enright M, Oakes C. Coronavirus testing: Information on COVID-19 tests according to state health departments. NBCNews.com. <https://www.nbcnews.com/health/health-news/coronavirus-testing-information-covid-19-tests-according-state-health-departments-n1158041#anchor-DistrictofColumbia>. Published March 16, 2020. Accessed March 16, 2020.